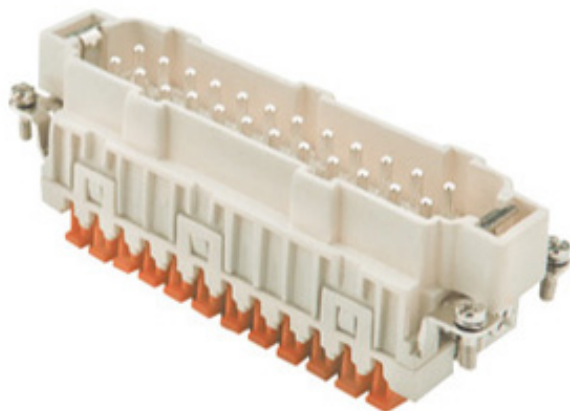



Product Sheet

Part Number: CSHM 24 N



Family	inserts
Version	Spring connection contacts SQUICH
Series	CSH
Product type	with male contacts
Model	male insert
Reference standard	EN 61984 (2001-11)
Contact type	silver plated
No. of poles	48 poles + \oplus (24 poles + \oplus , No. 25 - 48)
Voltage (V)	500V
Current (A)	16A (A.C./D.C.)
Wire section	0,14mm ² - 2,5mm ²
Awg size	26 - 14
Quality mark	
IP degree of protection	IP20 degree of protection without enclosure, IP65/IP66 with enclosure (EN 60529)

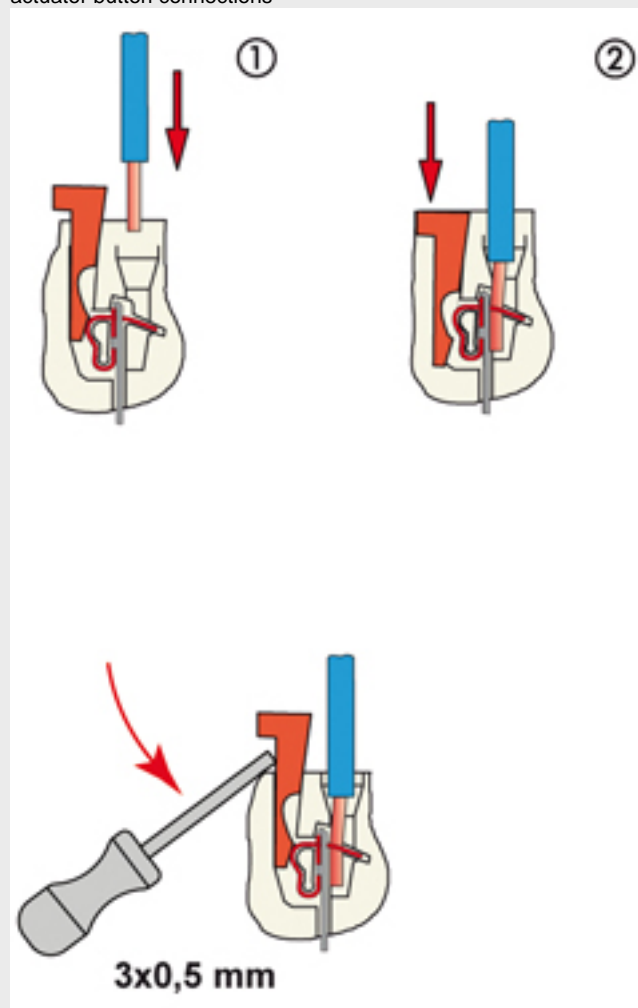
The information and the dimensions contained are not binding and may be changed without prior notice.
The drawing's dimensions are in mm.

Fixing centre distance	size "104.62" Double-size enclosures 104.62 accept two complementary inserts, order the standard insert and corresponding N insert for making the total polarity
Pollution degree	3

The information and the dimensions contained are not binding and may be changed without prior notice.
The drawing's dimensions are in mm.

Notes

actuator button connections



Reopening

- inserts for connectors with the following sections:
0.14 - 2.5 mm² - AWG 26 - 14
- conductors stripping length: 9...11 mm

The information and the dimensions contained are not binding and may be changed without prior notice.
The drawing's dimensions are in mm.



CSHF/M 06

- Eigenschaften gemäß EN 61984:
16A 500V 6kV 3
16A 400/690V 6kV 2
- Nennspannung gemäß UL/CSA: 600V
- Isolationswiderstand: > 10 GOhm
- Grenzwerte Umgebungstemperatur: -40 °C ... +125 °C
- Die Kontakteinsätze werden aus selbstverlöschendem Thermoplastharz UL94 V0 hergestellt
- Mechanische Lebensdauer: > 500 Zyklen
- Kontaktwiderstand: < 3 mOhm
- passende Gehäuse: Größe "77.27":
C7 IP67 Bügel aus Edelstahl
W-Type für aggressive Umgebung

The information and the dimensions contained are not binding and may be changed without prior notice.
The drawing's dimensions are in mm.